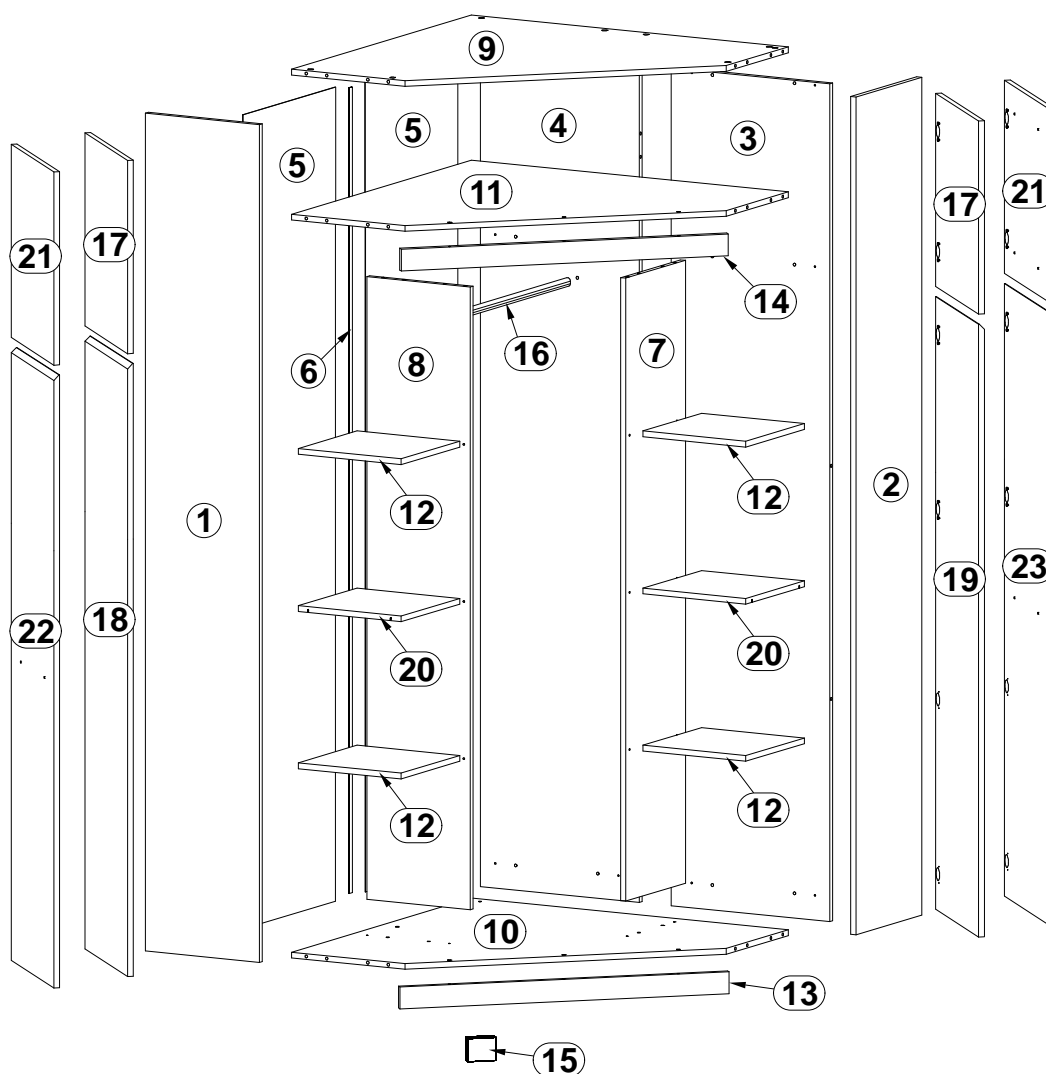
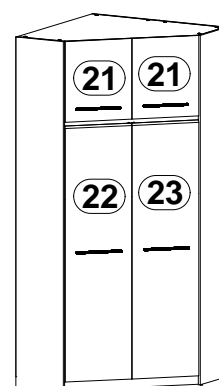
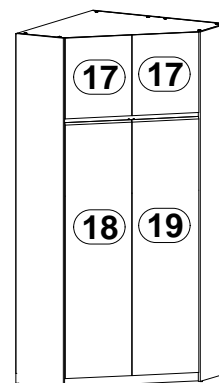
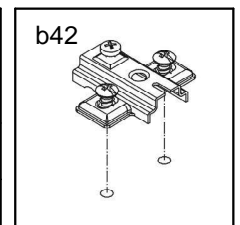
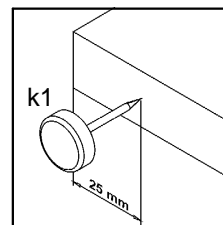
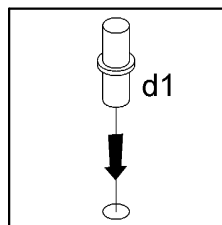
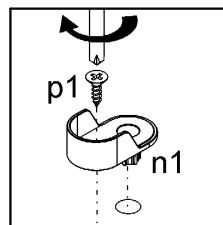
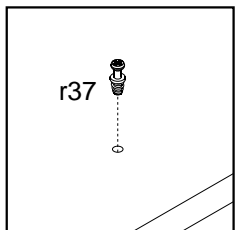
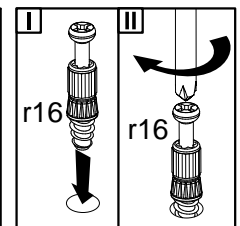
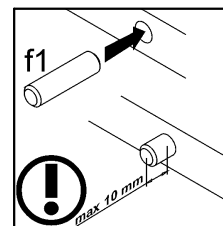
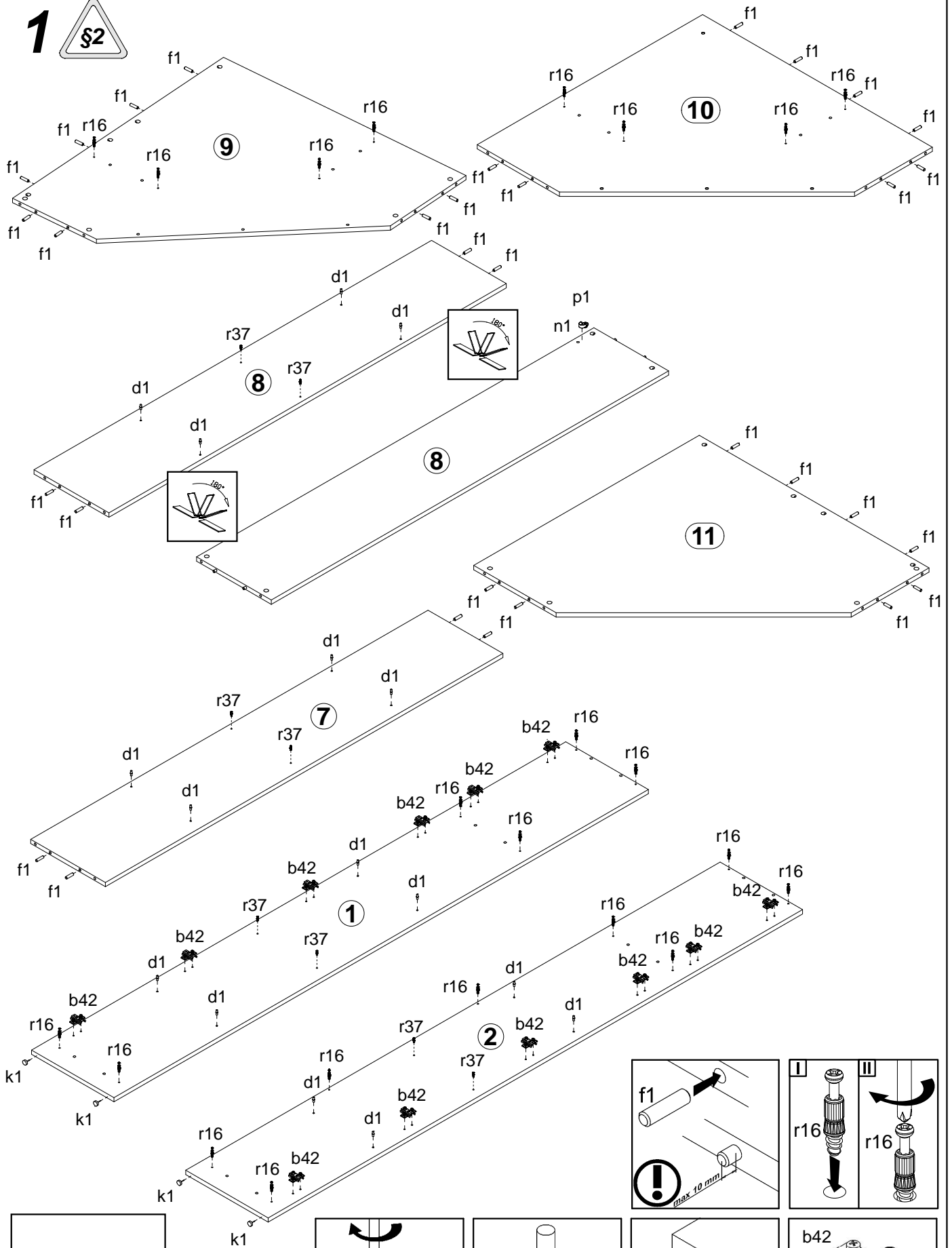


A	B	C	D	A	B	C	D		
1	S321-127	2300	355	1/4	13	S321-423	920	60	3/4
2	S321-128	2300	355	1/4	14	S321-424	914	60	3/4
3	S321-425-01	2300	495	1/4	15	S321-512	80	65	3/4
4	S321-426-01	2300	495	1/4	16	DR-630	630		3/4
5	S321-915	2235	498	1/4	17	S321-004	446	530	4/4
6	LH-2207	2207		1/4	18	S321-005	446	1682	4/4
7	S321-129	1710	332	2/4	19	S321-013	446	1682	4/4
8	S321-130	1710	332	2/4	20	S321-334	320	317	3/4
9	S321-328-01	990	970,5	3/4	21	S321-004-01	446	530	4/4
10	S321-329-01	990	970,5	3/4	22	S321-005-01	446	1682	4/4
11	S321-330-01	990	970,5	3/4	23	S321-013-01	446	1682	4/4
12	S321-331	320	317	3/4					

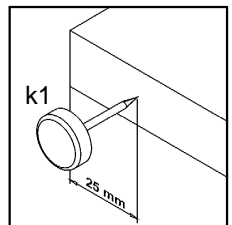
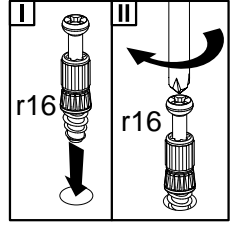
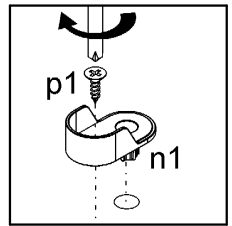
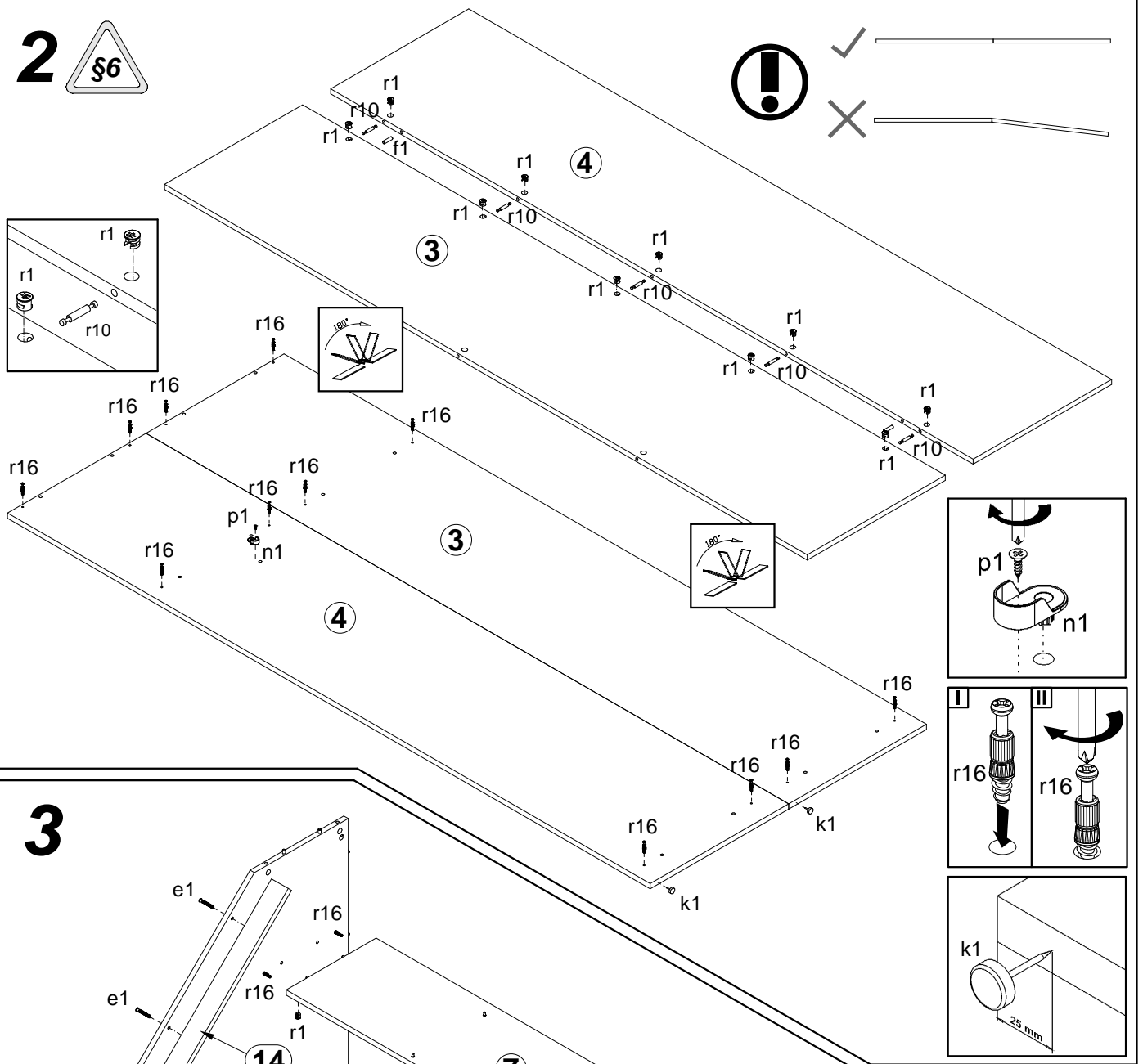
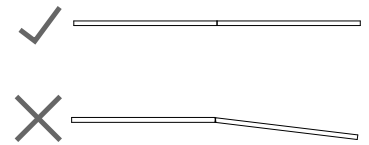


				12x a94 45°	12x b42 D5	16x d1 5x17 mm	7x e1 7x50 mm	34x f1 8x30 mm
2x p1 35x13 mm	1x p38 3,5x16 mm	24x p51 35x15 mm	44x r1 15x12mm #16	5x r10	34x r16 20/9	8x r36 23x12mm #16	8x r37 6/7/8	
7x s1	16x s2 16	2x s62	1x z1	8x p8 4x25 mm	4x c253 ⁸ 295 mm	-		

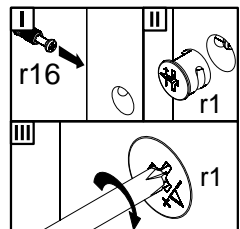
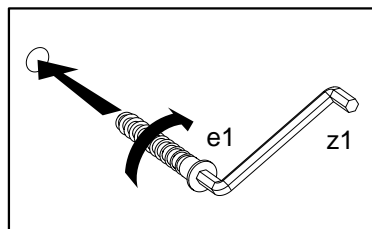
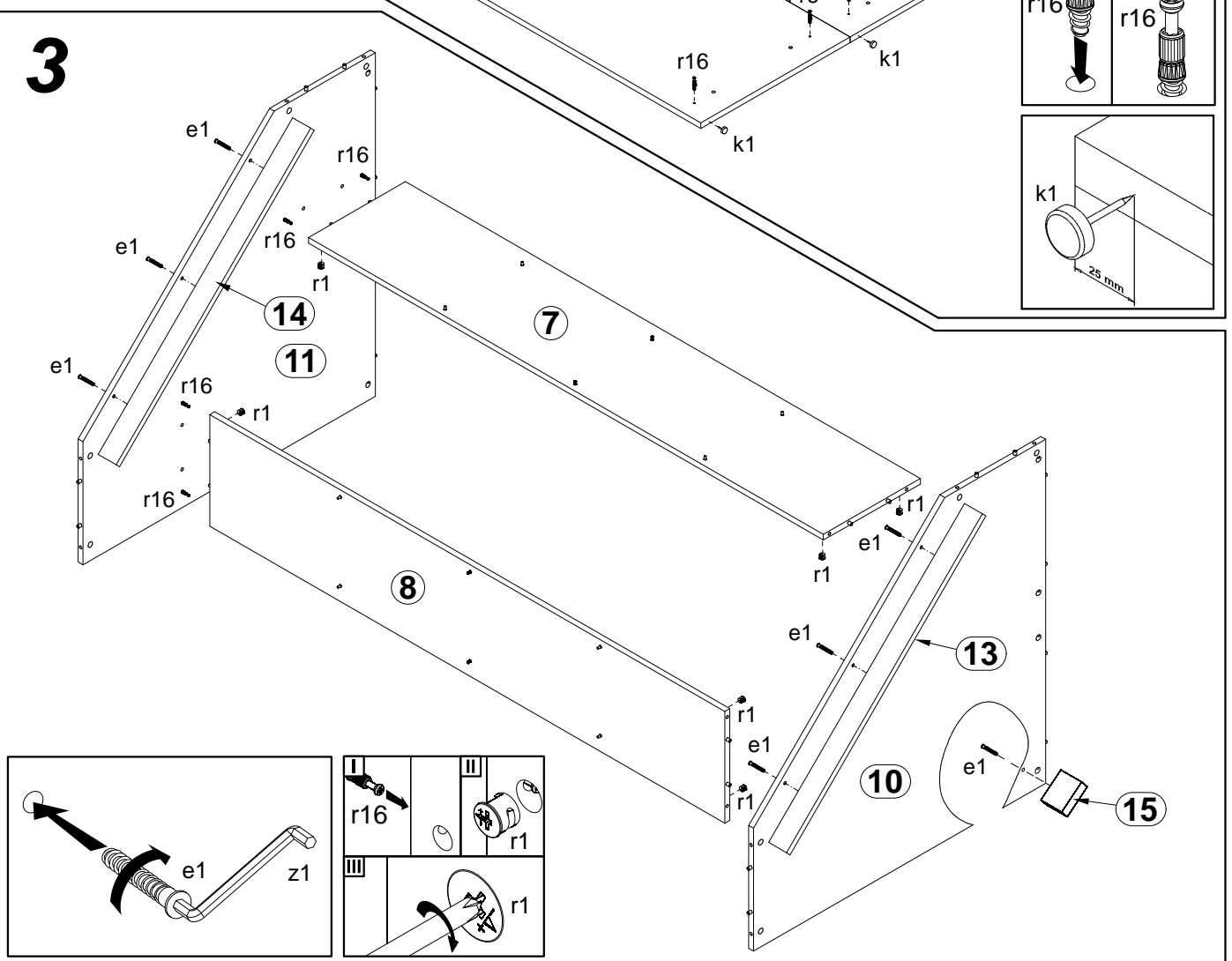
1 §2



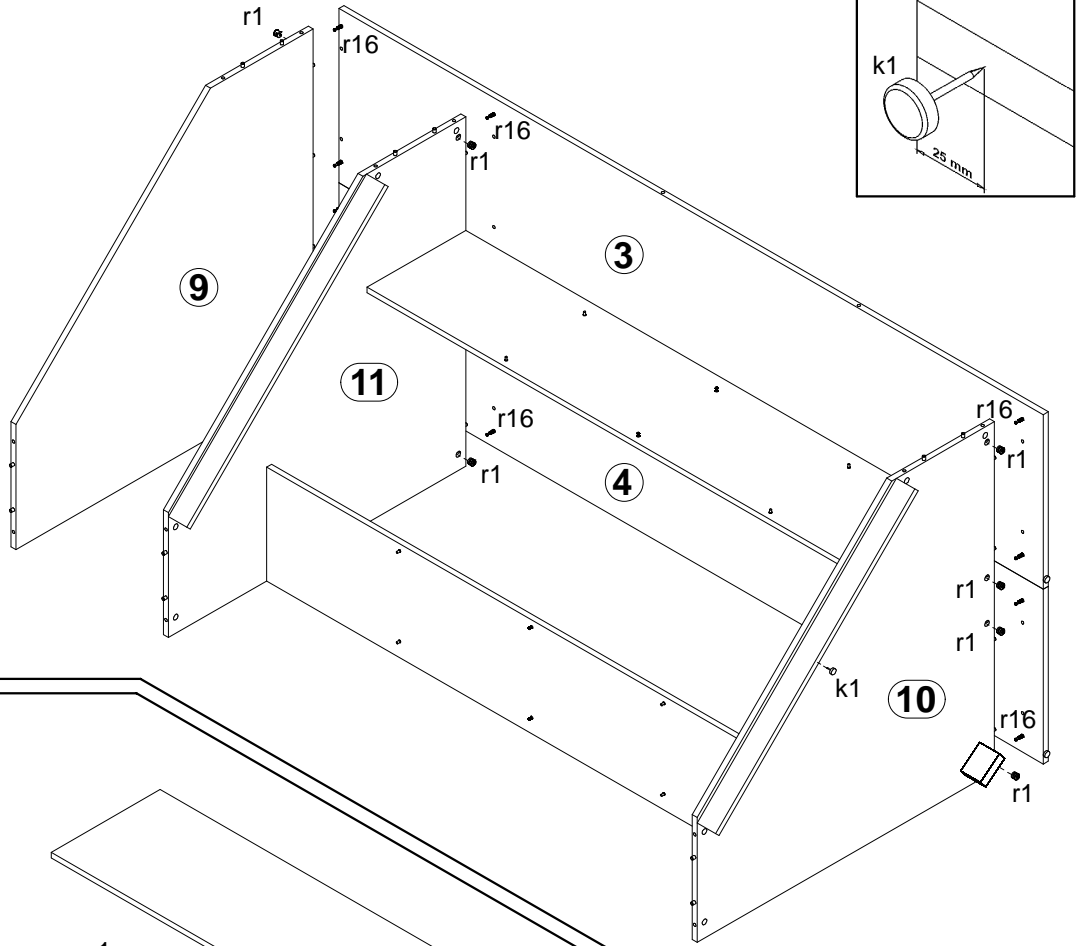
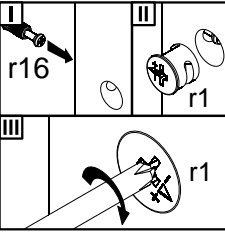
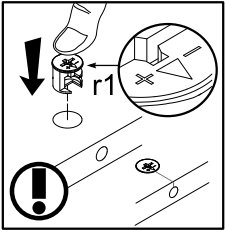
2



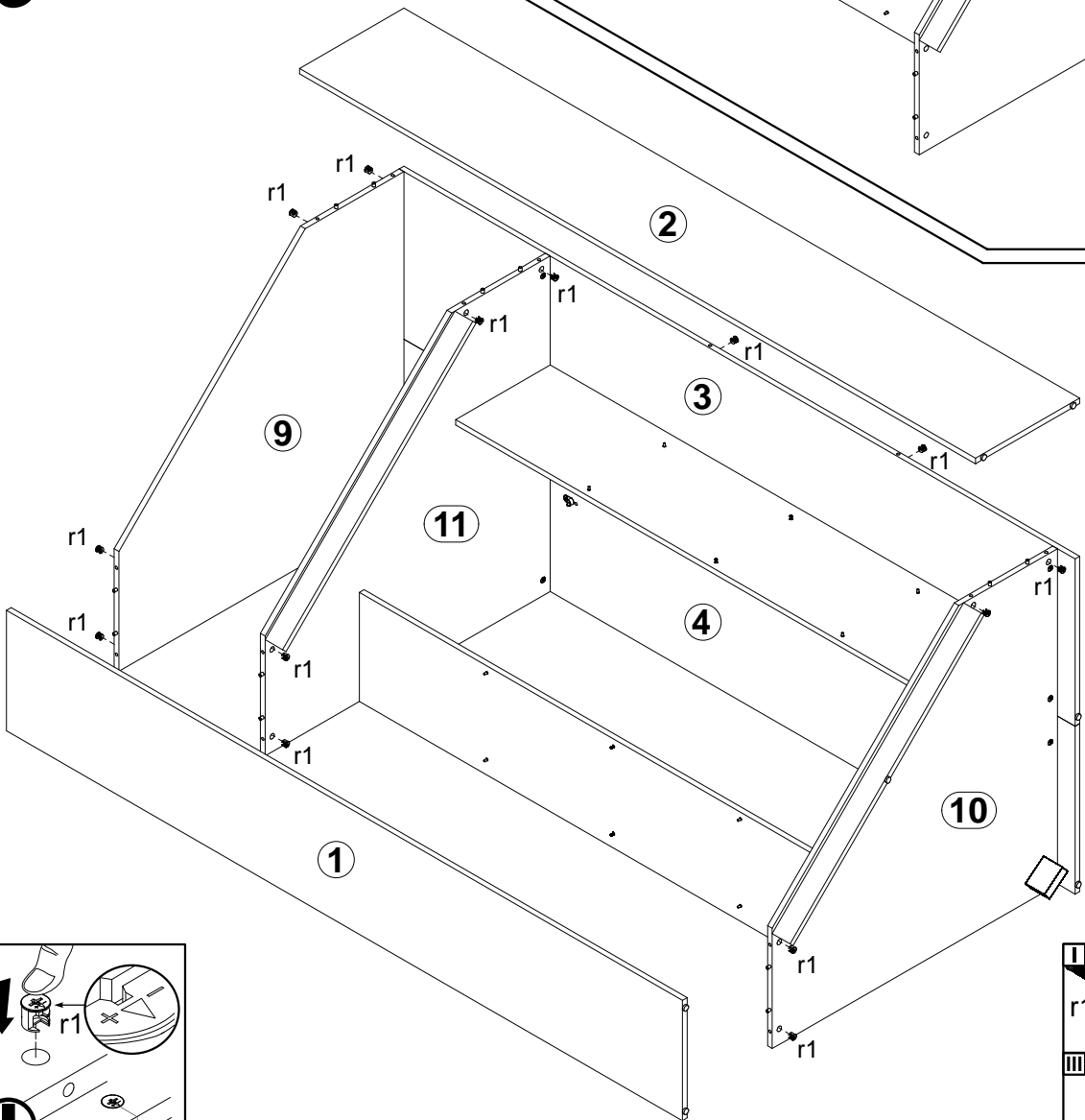
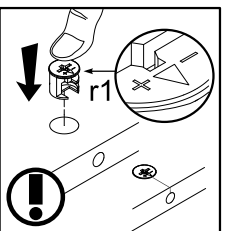
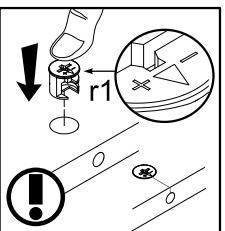
3



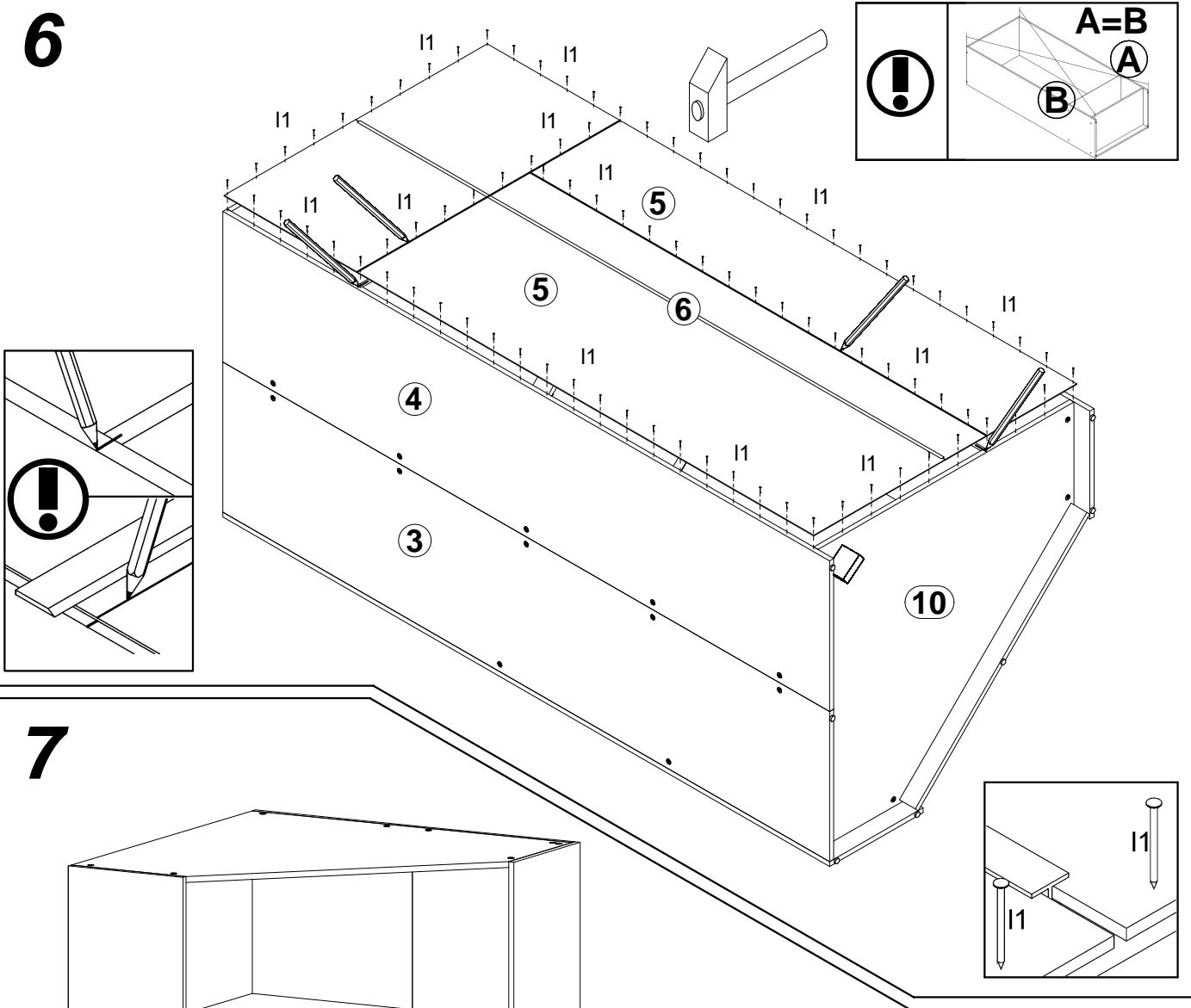
4



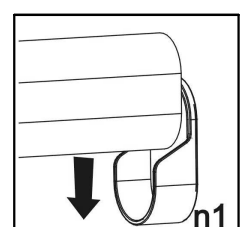
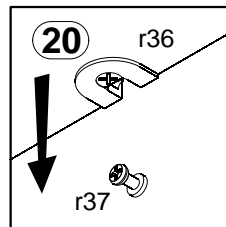
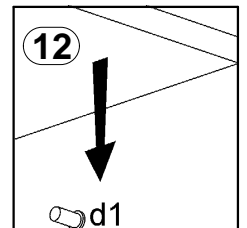
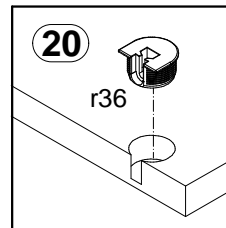
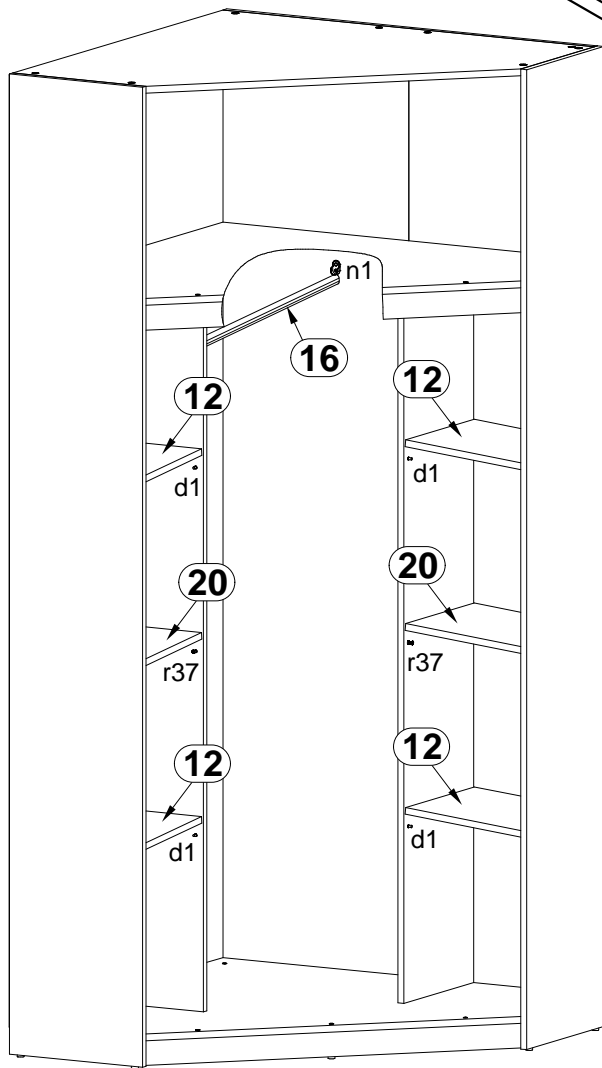
5



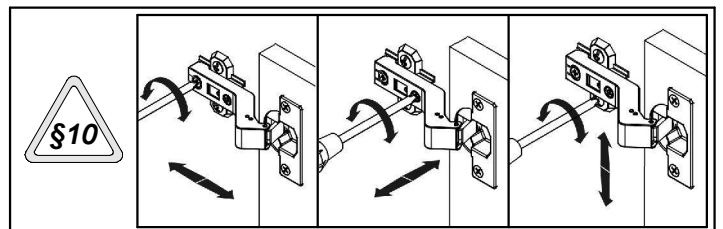
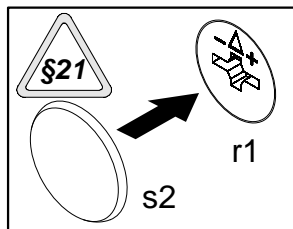
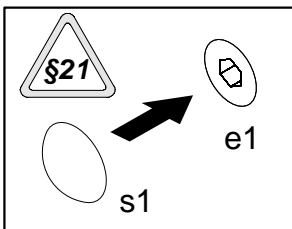
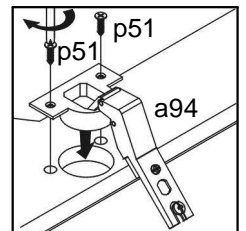
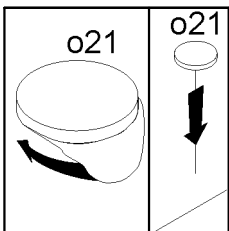
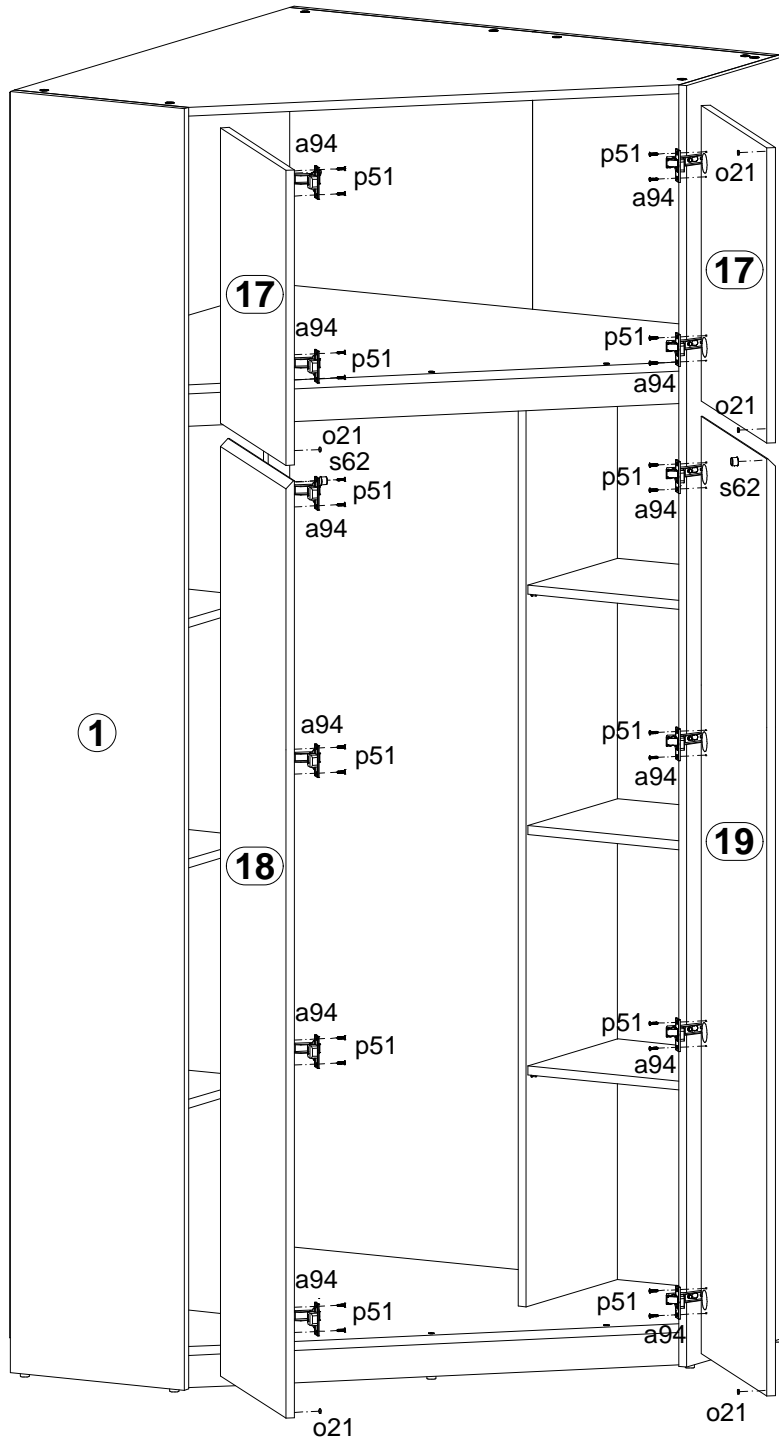
6



7



8



8

