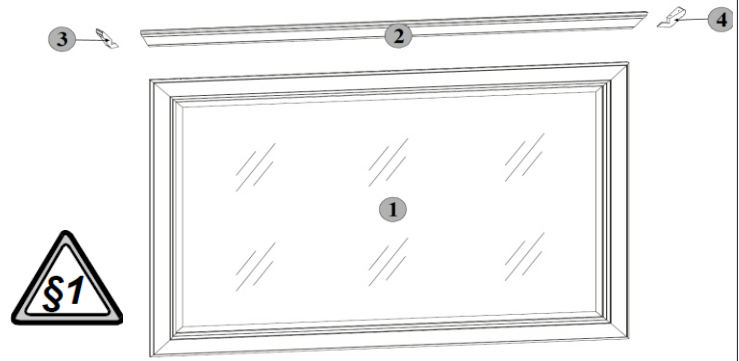


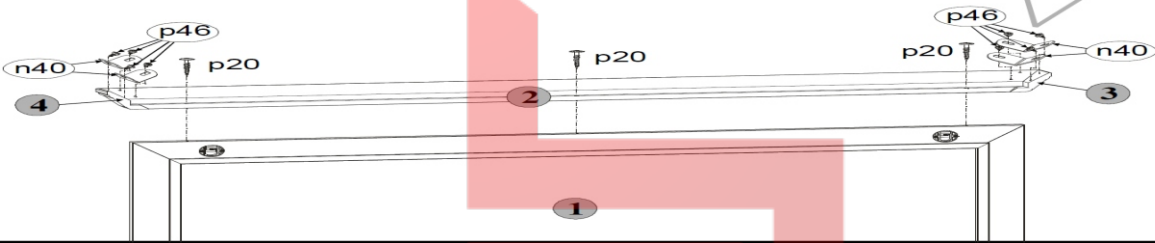
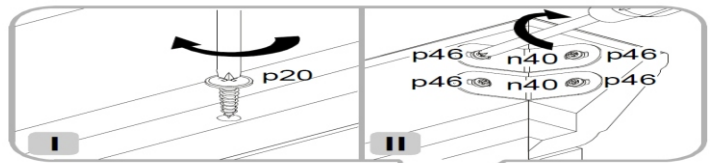
A	B	C	D
1	1245x820	S21-401	2/2
2	1318x79	S21-1587	1/2
3	58x79	S21-1588	1/2
4	58x79	S21-1589	1/2



- 2x $\phi 10 \times 50$ mm f35
 - 4x 26x26x16/1 - 125° n40
 - 3x $\phi 3,5 \times 20$ mm p20
 - 2x $\phi 6 \times 60$ mm p75
 - 8x $\phi 3 \times 7$ mm p46
-

1 NLUS 125

- 3x $\phi 3,5 \times 20$ mm p20
- 4x 26x26x16/1 - 125° n40
- 8x $\phi 3 \times 7$ mm p46



2 NLUS 125

- I $\phi 10$ mm
- II f35
- III f35 p75
- IV 1 cm f35 p75

- 2x $\phi 10 \times 50$ mm f35
- 2x $\phi 6 \times 60$ mm p75

